

LOCK SWITCH

WRL90

WRL90 IP66/IP67 LOCK SWITCH

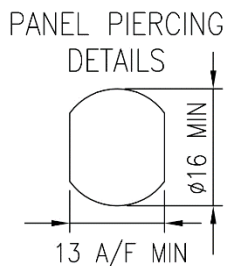
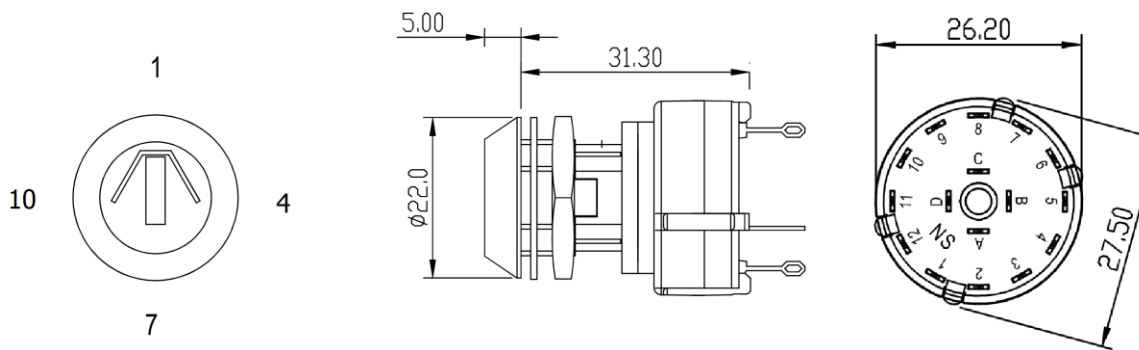
ELECTRICAL & MECHANICAL SPECIFICATION

Switch Rating:	150mA @250V ac/dc.	Life:	>10,000 Cycles
(Resistive load)	1A @24V dc	Operating Temperature:	-30°C to +85°C
Proof Voltage:	1500 Vac (Initial)	Lock Type:	5 Disc
Insulation Resistance:	>999MΩ @ 500V dc (Initial)	Lock Housing:	Zinc Alloy Bright Cr Plated
Contact Resistance:	<20mΩ (Initial)	Wafer Material:	Polyamide 6.6 G>F. V0 Rated
Contact Material:	Brass CZ108, Ag Plated	Housing Material:	Polycarbonate

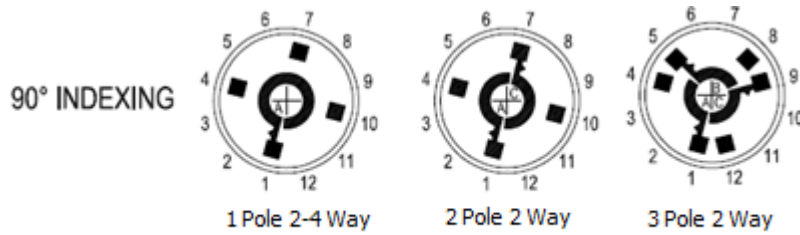
FEATURES

Suitable for Severity One marine environment (EN60068-2-52). Salt mist tested.

<p>Single wafer switch One - three poles</p> <p>Max panel thickness 3.5mm</p> <p>Made In UK</p>	<p>2 keys per switch - Up to 200 differ key combinations available</p> <p>Keys are double entry (can be inserted into lock either way up)</p> <p>Key removable at 90° positions</p>	<p>Contacts: Non shorting BBM</p> <p>Gold flashed or gold plate contacts available Solder or PCB terminals</p> <p>Two stage assembly: Lock through front, module snaps on from rear</p>
---	---	---

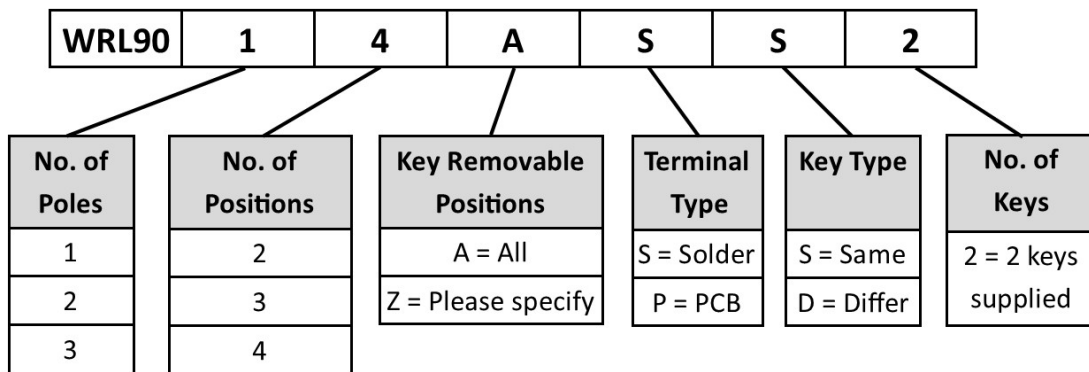


WRL90 LOCK SWITCH INDEXING



(Viewed from front)

WRL90 ORDERING CODE



Gold of Gold flash contacts available on request.

Add suffix G (gold) or GF (gold flash) to end of part number

